

9.1.2024-8.31.2027

# COMMUNITY HEALTH NEEDS ASSESSMENT



**BAPTIST HEALTH  
DEACONESS**  
MADISONVILLE

## Contents

Introduction .....	3
Foreword.....	3
Executive Summary.....	3
Organization Description .....	4
Community Served by the Hospital .....	5
Community Definition.....	5
Population Demographics.....	6
Data Sources and Collaborators .....	7
Required Input .....	7
Additional Sources of Input .....	7
Third-Party Collaboration .....	8
Information Gaps .....	8
Community Health Data .....	9
Health Outcomes: Mortality .....	9
Health Outcomes: Morbidity .....	10
Health Factors: Health Behaviors .....	11
Health Factors: Clinical Care .....	12
Health Factors: Social and Economic Factors .....	13
Health Factors: Physical Environment .....	14
Community and Public Health .....	15
Community Health Needs Assessment Process .....	16
Population Health Model.....	16
Prioritization of Community Health Needs.....	17
Identification of Significant Health Needs .....	19
Needs Not Addressed .....	19
Potentially Available Resources .....	19
Evaluation of Impact .....	20
Evaluation of Previous CHNA .....	20
Learning from Previous CHNA .....	20
Next Steps .....	21
Approval and Adoption.....	22
References .....	23
Appendix .....	24
Hopkins County Community Survey Results.....	24
Mini Resource Directory for Hopkins County, KY .....	39

## Introduction

### Foreword

Baptist Health Deaconess Madisonville conducted this community health needs assessment as basis for its community health and engagement strategy to cover fiscal years 2025–2027 (September 1, 2024–August 31, 2027). The approval and adoption of this report by the Baptist Health Deaconess Madisonville, Inc. Board of Directors complies with federal requirements of tax-exempt hospitals.

### Executive Summary

The purpose of this community health needs assessment (CHNA) is to identify and analyze community health needs for the community served by Baptist Health Deaconess Madisonville. This CHNA prioritizes the health needs the hospital will work to address from September 2024–August 2027.

The community health needs assessment process followed these steps:

- Inpatient data on patient county of residence defined the “community served” as Hopkins County.
- Secondary data was gathered from the United States Census Bureau, Centers for Disease Control and Prevention, County Health Rankings and Roadmaps, and Kentucky Injury Prevention and Research Center. These sources provided information on the community’s demographics, mortality, quality of life, clinical care options, health behaviors, socio-economic factors, and physical environment.
- Primary data was gathered from the Hopkins County Health Department on health priorities. The hospital also collected primary data on community input through a joint survey with the health department.
- Additional data input was solicited from written comments on the previous CHNA.
- Seven prioritization factors were used to examine health need, including: mortality, morbidity, magnitude, community input, public health, identification as an “area to explore,” and alignment. Each health need was scored for its impact on current community health conditions. The total score for each health need was summed. The top-scoring health needs were identified as priority health needs.
- The CHNA Steering Committee reviewed all data and concurred with the health needs identified by the prioritization matrix.
- The significant health needs to be addressed in this CHNA are:
  - 1. Mental Health**
  - 2. Obesity**
- This CHNA also identifies potentially available resources for addressing these health needs.
- This report was offered for approval to the Baptist Health Deaconess Madisonville, Inc. Board of Directors via a Certificate of Action (COA). This COA was effective as of August 23, 2024.
- The final adopted CHNA will be made public and widely-available on or before August 31, 2024 on the Baptist Health Deaconess Madisonville website at [BaptistHealthDeaconess.com](https://www.BaptistHealthDeaconess.com).
- Next steps include developing an action plan to address the identified health needs through the accompanying report to this CHNA, the Implementation Strategies.

### Organization Description

Baptist Health Deaconess Madisonville is licensed for 410 acute and skilled care beds with a special emphasis on community outreach and training students to provide medical care in rural areas. For its patients, the hospital has clinics conveniently located in nearby communities to provide care close to home. Overall, Baptist Health Deaconess Madisonville offers 55 points of care by a network of providers representing a wide variety of specialties.

Specialized, comprehensive services include the Jack L. Hamman Heart & Vascular Center for heart care, including electrophysiology, the Merle M. Mahr Cancer Center, and mother and baby care, including a neonatal intensive care unit (NICU). Recognized as a pioneer, Baptist Health Deaconess Madisonville was the first Kentucky hospital outside a metropolitan area to offer open heart surgery.

The hospital has earned Pathway to Excellence® designation for excellence in nursing services by the American Nursing Credentialing Center.

In 2012, the hospital – formerly known as the Trover Clinic and Regional Medical Center – joined Baptist Health and in 2021 became Baptist Health Deaconess Madisonville, a joint venture of Baptist Health and Deaconess Health systems. Learn more at [BaptistHealthDeaconess.com](https://www.BaptistHealthDeaconess.com).

## Community Served by the Hospital

### Community Definition

The community is defined as the geographic area from which a substantial number of patients admitted to the hospital reside. The Baptist Health Planning Department pulled a report reviewing calendar 2023 admission and the patient county of origin data. Hopkins County accounted for 59.0% of admissions in 2023, the latest calendar year available as of this report. Given this majority, Hopkins County was defined as the community for this CHNA.

The community definition for the purposes of this report was discussed by members of the hospital leadership team and the Baptist Health, System Director of Community Health and Engagement. This does not change or impact service area definitions for other hospital purposes. The chart below details the number of patients by county for counties with at least 10 patients originating in that county.

Calendar Year 2023 Admissions: Patient County of Origin		
<i>County</i>	<i>Admissions</i>	<i>Percent of Total</i>
HOPKINS, KY	2,504	59.0%
CHRISTIAN, KY	411	9.7%
WEBSTER, KY	399	9.4%
MUHLENBERG, KY	391	9.2%
CALDWELL, KY	113	2.7%
MCLEAN, KY	95	2.2%
TRIGG, KY	58	1.4%
TODD, KY	45	1.1%
CRITTENDEN, KY	32	0.8%
HENDERSON, KY	18	0.4%
UNION, KY	14	0.3%
LYON, KY	14	0.3%
LOGAN, KY	12	0.3%
OHIO, KY	10	0.2%
MONTGOMERY, TN	10	0.2%
MCCRACKEN, KY	10	0.2%
VANDERBURGH, IN	10	0.2%
All Other Counties	98	2.3%
<b>Grand Total</b>	<b>4,244</b>	<b>100.0%</b>
Source: Baptist Health Planning & Analysis Qlik Data Exports (Patient Level Export)		

### Population Demographics

Identifying population demographics helps the hospital team understand characteristics unique to their community. Notable for Hopkins County is the population decrease, as compared with the slight population increase of the Kentucky state average. Racial and ethnic composition in the community is similar to the state. There is a higher percentage of the community under age 65 who are impacted by disability when compared with the state average. Additionally, Hopkins County has double the percent of people under age 65 without health insurance when compared with the state rate. The chart below shows county-level demographics as compared with Kentucky.

<b>County-Level Demographics as Compared to State</b>			
<i>Category</i>	<i>Demographic Metric</i>	<i>Hopkins County</i>	<i>Kentucky</i>
<b>Population</b>	Population, 2023 estimate	44,929	4,526,154
	Population per square mile, 2020	83.8	114.1
	Population, Percent Change estimate: April 1, 2020 to July 1, 2023	-1.1%	0.4%
<b>Age</b>	Persons under 5 (percent)	5.8%	5.8%
	Persons under 18 (percent)	22.9%	22.3%
	Persons 65 years and older (percent)	19.1%	17.6%
<b>Gender</b>	Female persons (percent)	50.9%	50.3%
<b>Race, Ethnicity, and Country of Origin</b>	White, alone (percent)	89.5%	86.9%
	Black or African American, alone (percent)	6.8%	8.7%
	American Indian or Alaska native, alone (percent)	0.3%	0.3%
	Asian, alone (percent)	0.7%	1.8%
	Native Hawaiian or Other Pacific Islander, alone (percent)	0.1%	0.1%
	Two or more races (percent)	2.6%	2.3%
	Hispanic or Latino (percent)	2.4%	4.3%
<b>Health</b>	Foreign-born persons, 2018-2022 (percent)	1.7%	4.1%
	Persons with a disability ≤65 years old (percent)	22.3%	13.3%
	Persons without health insurance ≤65 years old (percent)	13.3%	6.7%
Source: United States Census Bureau QuickFacts (2023)			

## Data Sources and Collaborators

### Required Input

Three sources of input are required for the CHNA, and those three sources of input were satisfied through the inclusion of the following sources:

- Public health agency
  - Input from the Hopkins County Health Department was included to satisfy this requirement. Baptist Health Deaconess Madisonville is grateful for the partnership with the Hopkins County Health Department on this report. Public health input was included in the prioritization matrix under “Public Health.”
- Members of medically underserved, low-income and minority populations, or individuals representing the interests of these populations
  - General community input was solicited through a Survey Monkey survey based on a Kentucky Department for Public Health survey with some suggested modifications Hopkins County Health Department. The “Hopkins County Community Survey” received 111 responses from June 10, 2024–July 11, 2024. Twenty-two questions were included on a survey with an estimated completion time of eight minutes. Results are included in the Appendix to this report.
  - The hospital set up the survey and analyzed the results. The health department solicited feedback and took the lead on gathering responses representative of the community. The general community input was included in the prioritization matrix under “Community.”
- Written comments received on the previous CHNA
  - Written comments were solicited via a webform at [Community Health Needs Assessments - Baptist Health](#), beginning in September 2021 and available through the present time. The webform included the language: “Please provide any feedback on our Community Health Needs Assessment or Strategic Implementation Plan. Input will be considered as we measure progress on our current plan and as we conduct our next assessment. If you represent an organization whose feedback you would like represented on our CHNA Steering Committee, please contact us below.”
  - The webform received responses, but no comments provided direct feedback on the preceding CHNA or accompanying Implementation Strategies report.

### Additional Sources of Input

Other data sources used to understand the community health needs include:

- Baptist Health Planning
  - The Baptist Health Planning Department provided data on inpatient county of origin, which was used to determine the community definition for this CHNA.
- Center for Neighborhood Technology
  - The “Housing and Affordability Index” was used to determine the potential impact of transportation costs on the health outcomes in the community.
- Centers for Disease Control and Prevention (CDC)
  - The CDC’s National Center for Health Statistics data report “Leading Causes of Death” identified mortality in the community served.

- County Health Rankings and Roadmaps (a program of the University of Wisconsin Population Health Institute and the Robert Wood Johnson Foundation)
  - The County Health Rankings and Roadmaps is a publicly available data repository updated annually from many sources. Health data is available at a county level on such topics as quality of life, clinical care, health behaviors, socio-economic factors, and physical environment data.
- Kentucky Injury Prevention and Research Center (KIPRC)
  - KIPRC provides county-level drug overdose rates, as well as data on hospital visits and inpatient admissions due to drug use.
- United States Census Bureau
  - The 2023 Quick Facts data identified community demographics regarding population, age, gender, race/ethnicity, country of origin, and health data.

### Third-Party Collaboration

No third-party organizations were involved in the writing of this report outside of providing data and feedback as described in the above sub-sections of this CHNA. The Baptist Health System Director, Community Health and Engagement is responsible for the data gathering and needs analysis in this report.

### Information Gaps

As is often the case with data collection, some of the data contained within this CHNA was gathered a few years prior to the writing of this report. This may not reflect what is currently happening in the community and the impact of interventions that have since been placed.

We also recognize that community survey data only represents the voices of those who were offered the survey and able to read and respond to it. There is an inherent privilege in this circumstance that may not represent the experience of all living in the community. The Hopkins County Health Department mitigated some of these challenges by entering survey data on behalf of community members. We are grateful for their team's dedication to this project.



## Community Health Data

### Health Outcomes: Mortality

Health outcomes detail how healthy a community is and are measured by length of life (mortality) and quality of life (morbidity). The charts below detail the leading causes of death in Hopkins County. Heart disease, cancer, and COVID-19 are the top three leading causes of death in this community. The latest data available is from 2020, so COVID-19 is no longer a leading cause of death.

Health Outcomes: Mortality Leading Causes of Death in Hopkins County, KY				
Ranking	Cause of Death	Deaths	Population	Crude Rate Per 100,000 Residents
1	Diseases of heart	176	44,812	392.8
2	Malignant neoplasms (cancers)	103	44,812	229.8
3	COVID-19	46	44,812	102.7
4	Chronic lower respiratory diseases	42	44,812	93.7
5	Cerebrovascular diseases	31	44,812	69.2
6	Accidents (unintentional injuries)	25	44,812	55.8
7	Alzheimer's disease	22	44,812	49.1
8	Influenza and pneumonia	18	44,812	Unreliable
9	Septicemia	13	44,812	Unreliable
10	Diabetes mellitus	13	44,812	Unreliable
11	Nephritis, nephrotic syndrome and nephrosis	13	44,812	Unreliable

Source: Centers for Disease Control and Prevention, National Center for Health Statistics (2018-2022)

**Health Outcomes: Morbidity**

Many factors impact morbidity in a community. We looked at self-reported metrics, like the community’s perception of their own physical and mental health. We also reviewed disease prevalence, like diabetes, and indicators of infant health, including babies born at low birthweights. For an idea of morbidity in the community, the chart below details quality of life metrics for the community compared with metrics from Kentucky and the United States.

<b>Health Outcomes: Morbidity</b>			
<b>Quality of Life Metrics</b>			
<i>Quality of Life Measures</i>	<i>Hopkins County</i>	<i>Kentucky</i>	<i>United States</i>
Poor or Fair Health**	22%	21%	14%
# of Poor Physical Health Days in Past 30 Days**	4.8	4.5	3.3
# of Poor Mental Health Days in Past 30 Days**	5.8	5.5	4.8
Diabetes Prevalence	11%	12%	10%
Low Birth Weight Percentage of live births with low birth weight (< 2,500 grams)	9%	9%	8%
**Self-Reported Health Metric Source: County Health Rankings (2024)			

**Health Factors: Health Behaviors**

Health factors influence an individual’s health and are impacted by four different areas: health behaviors, clinical care, social and economic factors, and the physical environment. Health behaviors refer to health-related practices that can improve or damage health. However, we do recognize that not all community members have the access or means to make healthy choices, as evidenced by the inclusion of data points such as food insecurity (County Health Rankings and Roadmaps, 2024). Areas highlighted in red were noted as “areas of opportunity” and those highlighted in green were noted as “areas of strength” by the County Health Rankings and Roadmaps.

<b>Health Factors: Health Behaviors</b>			
<i>Health Behaviors</i>	<i>Hopkins County</i>	<i>Kentucky</i>	<i>United States</i>
<b>Alcohol Use</b>			
Adult Smoking Rate	24%	20%	15%
Excessive Drinking Rate	14%	15%	18%
Alcohol-Impaired Driving Deaths	13%	26%	26%
<b>Drug Use<sup>2</sup> (rate per 100,000 population)</b>			
Fatal Overdose	<10	47.4	NA
ED Visits for Nonfatal Overdose	183.9	250.0	NA
Inpatient Hospitalizations for Nonfatal Overdose	130.7	95.6	NA
ED Visits for Substance Use Disorder	671.3	985.3	NA
Inpatient Hospitalizations for Substance Use Disorder	51.0	41.9	NA
<b>Sexual Activity</b>			
Sexually Transmitted Infections Number of newly diagnosed chlamydia cases per 100,000 population	358.9	410.3	495.5
Teen Births Number per 1,000 female population ages 15-19	37	26	17
<b>Diet and Exercise</b>			
Physical Inactivity Rate	31%	30%	23%
Adult Obesity Rate	41%	41%	34%
Food Insecurity % of the population who lack adequate access to food	15%	13%	10%
Limited Access to Healthy Foods % of population who are low-income and do not live close to a grocery store	7%	6%	6%
Sources: County Health Rankings (2024) and Kentucky Injury Prevention and Research Center (2022) <sup>2</sup>			

**Health Factors: Clinical Care**

Clinical care refers to direct medical treatment or testing. “Access to affordable, quality health care can prevent disease and lead to earlier disease detection,” according to the County Health Rankings and Roadmaps model. Limited or low-quality care can lead to worse health outcomes and lower quality of life.

Clinical care is examined here through two lenses: access and quality. Access to care includes having insurance coverage and having providers available in their communities. “Language barriers, distance to care, and racial disparities in treatment present further barriers to care,” according to the County Health Rankings and Roadmaps. Quality of care includes evidence-based decisions, quality improvement efforts, and care coordination within and among facilities (County Health Rankings and Roadmaps, 2024). Areas highlighted in green were noted as “areas of strength” by the County Health Rankings and Roadmaps.

<b>Health Factors: Clinical Care</b>			
<i>Clinical Care Measures</i>	<i>Hopkins County</i>	<i>Kentucky</i>	<i>United States</i>
<b>Access to Care</b>			
Uninsured Rate	6%	7%	10%
Ratio of Population to Primary Care Physicians	1,001:1	1,600:1	1,330:1
Ratio of Population to Mental Health Providers	750:1	340:1	330:1
<b>Quality of Care</b>			
Preventable Hospital Stays Rate of hospital stays for ambulatory-care sensitive conditions per 100,000 Medicare enrollees	3,031:1	3,457	2,681
Source: County Health Rankings (2024)			

**Health Factors: Social and Economic Factors**

Social and economic factors affect how long and how well communities live. Areas highlighted in red were noted as “areas of opportunity” and those highlighted in green were noted as “areas of strength” by the County Health Rankings and Roadmaps.

<b>Health Factors: Social and Economic Factors</b>			
<i>Social and Economic Factors</i>	<i>Hopkins County</i>	<i>Kentucky</i>	<i>United States</i>
<b>Education</b>			
High School Completion	89%	88%	89%
Bachelor's Degree or Higher <sup>2</sup>	15.5%	26.5%	34.3%
<b>Employment/Economic Factors</b>			
Unemployment	4.4%	3.9%	3.7%
Median Household Income	\$52,200	\$59,200	\$74,800
Income Inequality Ratio of household income at the 80th percentile to that at the 20th percentile	4.8	4.9	4.9
Persons in Poverty <sup>2</sup>	19%	16.5%	11.5%
<b>Social Support</b>			
Social Associations Number of associations per 10,000 residents	17.9	10.2	9.1
Children in Single Parent Households	30%	25%	25%
<b>Community Safety</b>			
Firearm Fatalities Number of firearm deaths per 100,000 population	20	18	13
Injury Deaths Number of injury deaths per 100,000 population	93	106	80
Motor Vehicle Crash Deaths Number of motor vehicle crash deaths per 100,000 population	19	18	12
Source: County Health Rankings (2024) United States Census Bureau QuickFacts (2023) <sup>2</sup>			

**Health Factors: Physical Environment**

The physical environment of a community impacts its health in obvious areas, like air quality (County Health Rankings and Roadmaps, 2024). The physical environment also impacts quality of life and access to care through factors like its connectivity to jobs and healthcare. Opportunities for transportation, as well as its relative costs and ease of access, greatly influence the health of a community. The relative cost, availability, and quality of housing also affect health.

<b>Health Factors: Physical Environment</b>			
<i>Physical Environment Measures</i>	<i>Hopkins County</i>	<i>Kentucky</i>	<i>United States</i>
<b>Environment</b>			
Air Pollution—Particulate Matter	8.6	8.2	7.4
<b>Housing</b>			
Severe Housing Problems Percent of households experiencing ≥1 of the following: overcrowding, high housing costs, lack of kitchen facilities, lack of plumbing facilities	12%	13%	17%
Severe Housing Cost Burden Percent of households that spent ≥50% or more of their income on housing	9%	12%	14%
Broadband Access	85%	86%	88%
<b>Transportation<sup>2</sup></b>			
Transportation Costs Average transportation costs as a percent of average income	31%	NA	NA
Transit Performance Score Score from 1-10 that looks at connectivity, access to jobs, and frequency of service	0 (Car-dependent with very limited or no access to public transportation)	NA	NA
Source: County Health Rankings (2024) and The Center for Neighborhood Technology (2023) <sup>2</sup>			

### Community and Public Health

Community input was solicited through a survey administered Baptist Health Deaconess Madisonville and Hopkins County Health Department in June 2024–July 2024. The survey received 111 responses by the time data was pulled for this CHNA on July 11, 2014. Complete survey data collected as of this date is included in the Appendix of this report. For the purposes of weighing community feedback in our determination of priority health needs, we selected responses to the question, “What are the most important health problems in our community?” The top health issues of importance to the community are listed below.

<b>Community Input from Hopkins County: Most Important Health Issues Ranked</b>	
<i>Health Need</i>	<i>Rank</i>
Mental health problems	1
Dental problems	2
Suicide and/or bullying	3
Overdose	3
Overweight/obesity	3
Source: Hopkins County Community Survey (2024)	

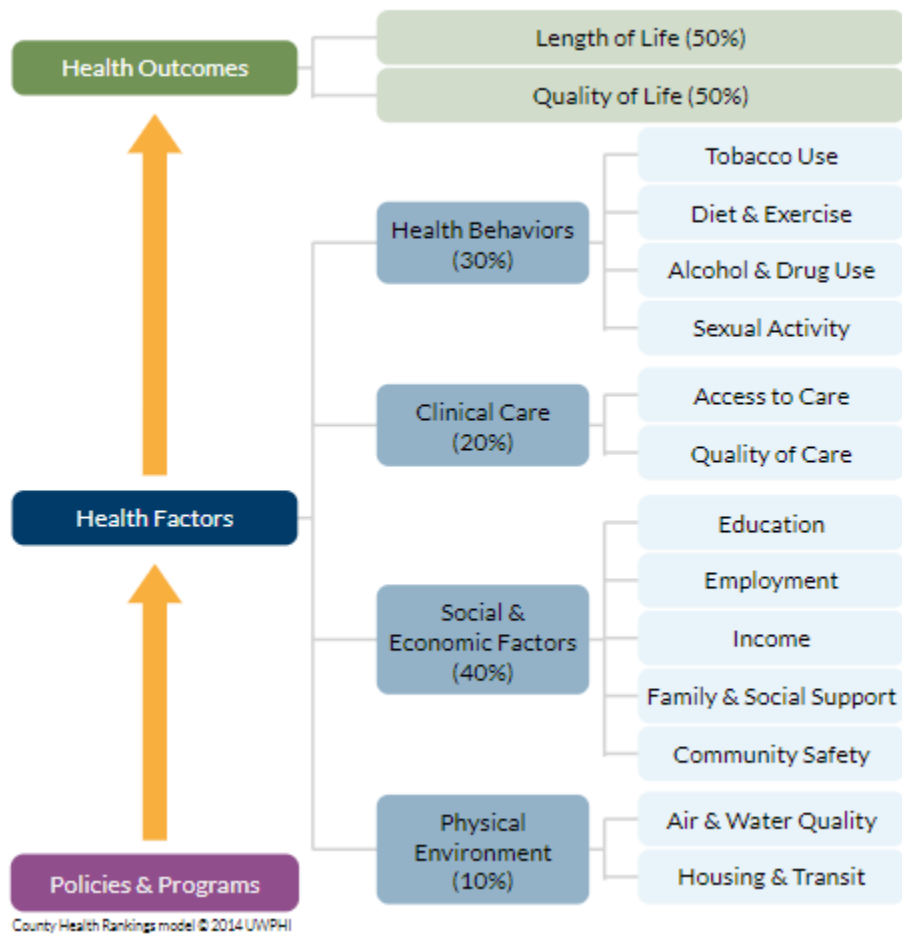
Hopkins County Health Department provided their feedback via personal communication on the most important health issues in the community. Their ranking of issues is listed below.

<b>Public Health Input: Priority Health Needs Identified</b>	
<i>Health Need</i>	<i>Ranking</i>
Mental Health	1
Obesity	2
Substance Use	3
Sexually-Transmitted Infections	4
Source: Hopkins County Health Department (2024)	

## Community Health Needs Assessment Process

### Population Health Model

The main secondary data source for this CHNA is the County Health Rankings and Roadmaps. Their model is depicted below.



This population health model illustrates that health outcomes are determined 40% by social and economic factors, 30% by health behaviors, 20% by clinical care, and 10% by the physical environment. (A fifth set of health factors, genetic, is not included in these rankings because these variables cannot be impacted by community-level intervention.) Thus, the model tells us that 80% of health outcomes are dictated by the social determinants of health.

The World Health Organization defines social determinants of health as “the non-medical factors that influence health outcomes. They are the conditions in which people are born, grow, work, live, and age, and the wider set of forces and systems shaping the conditions of daily life.”

By including the social determinants of health in the needs we assessed for this CHNA, Baptist Health Deaconess Madisonville is positioned to address those factors which have the greatest impact on our community’s health.



## Prioritization of Community Health Needs

To increase transparency and data-supported decisions, Baptist Health developed a process for identifying priority health needs using a prioritization matrix. The process began by listing the health needs in the County Health Rankings model, as well as some health conditions.

Each of these needs was scored for impact across factors. These prioritization factors are:

- **Mortality:** How is this health need related to the leading causes of death in this community?
  - Data reference: "Leading Causes of Death"
  - Heart disease is the leading cause of death in this community, so it received three points. Cancer is the second leading cause of death, so it received two points. COVID-19 was the third leading cause, so it received one point.
- **Morbidity:** How does this need relate to this community's quality of life data?
  - Data reference: "Quality of Life" and "Clinical Care"
  - In reviewing the data related to what makes a community sick, the high rates of self-reported poor mental health stood out against the state and national rates, so mental health received three points for its impact. The number of self-reported poor physical health days was higher than both state and national averages, so diet and exercise received one point. The rate of preventable hospital stays was higher than the national average, but lower than the state average, so this gave quality of care two points.
- **Magnitude:** How many people in the community are personally affected by this health need?
  - Data reference: "Health Behaviors," "Social and Economic Factors" and "Physical Environment"
  - The obesity rate impacted nearly half of the community, so this area received three points. Physical inactivity affected over one-third of the community, so diet and exercise received two points. The smoking rate affected nearly one-fourth of the community, so substance use (the area in which smoking is grouped) received two points.
- **Community:** Was this need identified as a priority by the community served?
  - Data reference: "Community Input: Most Important Health Problems Ranked"
  - The top concern in the community survey was mental health, so this area received three points. The second concern was "dental problems," so access to care received two points. Overdose was the third top concern, so substance use received one point. Obesity was also a top three concern, so it received one point. "Suicide and bullying" was another top three health concern, but this was included in the points given to mental health.
- **Public Health:** Was this need identified as a priority by a public health agency or other community agencies representing the broad interests of the community?
  - Data reference: "Public Health Feedback"
  - The Hopkins County Health Department identified their top areas of focus, in descending order: mental health (three points), obesity (two points), and substance use (one point).
- **Explore:** Is this area delineated as "an area to explore" by the County Health Rankings?
  - Data reference: Areas highlighted in red on charts in the "Community Health Data" section
  - The obesity rate was highlighted as the health need affecting the largest percent of the population, so three points were given to obesity. The smoking rate was highlighted with the

second largest impact in the community, so substance use received two points. The teen birth was also highlighted, so sexual activity received one point.

- **Alignment:** Was this an identified health need on previous CHNA?
  - Data reference: FY22-24 Baptist Health Corbin CHNA
  - The previous CHNA listed, in order of importance, access to care, mental health, obesity, and COVID-19 as significant health needs to address. To recognize and support existing efforts, three points were credited to access to care, two points were given to mental health, and one point was given to obesity.

After each prioritization factor was scored, the scores were summed for each health need. The chart below shows the prioritization matrix described.

Health Needs Prioritization Matrix									
Health Needs	Area	Mortality	Morbidity	Magnitude	Community	Public Health	Explore	Alignment	Sum
<i>Health Behaviors</i>	Substance Use (Drug/Alcohol/Tobacco)			1	1	1	2		5
	Diet and Exercise		2	2					4
	Sexual Activity						1		1
<i>Clinical Care</i>	Access to Care				2			3	5
	Quality of Care		1						1
<i>Social and Economic Factors</i>	Education								0
	Employment								0
	Income								0
	Family & Social Support								0
	Community Safety								0
<i>Physical Environment</i>	Air & Water Quality								0
	Housing & Transit								0
<i>Health Outcomes</i>	Heart Disease	3							3
	Cancer	2							2
	Diabetes								0
	<b>Mental Health</b>		<b>3</b>		<b>3</b>	<b>3</b>		<b>2</b>	<b>11</b>
	Stroke								0
	Alzheimer's Disease								0
	COVID-19/Respiratory Disease	1							1
	<b>Obesity</b>			<b>3</b>	<b>1</b>	<b>2</b>	<b>3</b>	<b>1</b>	<b>10</b>

## Identification of Significant Health Needs

The top-scoring health needs were identified as significant health needs to address in the CHNA:

- **Mental Health**
- **Obesity**

This report was provided to members of the Baptist Health Deaconess Madisonville leadership team. This review preceded approval from the Baptist Health Deaconess Madisonville, Inc. Board of Directors, the authorized body for Baptist Health Deaconess Madisonville.

## Needs Not Addressed

The top-scoring health needs were chosen as significant health needs for this report. Other health needs exist within the community but did not score as high as the ones identified. In the previous CHNA, access to care and COVID-19 were identified as significant health needs. While we recognize that these are still important areas of focus, we will report progress on these within the context of addressing mental health and obesity. See the subsection “Learning from Previous CHNA” for further discussion.

## Potentially Available Resources

Community health needs are best addressed collaboratively. Due to the large and complex nature of health needs, each type of organization has a part to play. Each of the below types of organizations may be available to address the significant health needs identified in this report:

- Health Facilities and Services
  - The Kentucky Cabinet for Health and Family Services maintains an inventory of health facilities and services. Due to the nature of the bi-monthly updates to this inventory, the website containing this information is linked here: [Inventory of Health Facilities and Services - Cabinet for Health and Family Services \(ky.gov\)](#).
- Health Department
  - The Hopkins County Health Department offers multiple programs and departments supporting their vision “To obtain the highest level of health status possible for the citizen of Hopkins County.” More information is available on their website: [Hopkins County Health Department \(hopkinscohealthdept.com\)](#).
- Community-Based Organizations
  - The Hopkins County Health Department provided a resource directory of organizations available in the community. This information was compiled in May 2023 by the Interagency Council of Hopkins County and the United Way of the Coalfield. The directory is included in the Appendix of this report.

## Evaluation of Impact

### Evaluation of Previous CHNA

The actions below were taken as part of the Implementation Strategies accompanying the previous CHNA. The actions are listed by the health needs previously identified as significant health needs.

- Access to Care
  - Partnered with BluMine Health Direct Primary Care to be linked with patients needing specialty care.
  - To increase access to care by educating providers, operated Family Medicine Residency program with teaching carried out by hospital staff and medical group providers.
  - To increase the healthcare worker pipeline, continue to provide the clinical experience for the Murray State University Nurse Anesthesia Program.
- Mental Health
  - Operated a 22-bed acute psychiatric unit to care for patients with a variety of mental health needs, including psychosis, dementia, suicidal thoughts, and depression.
  - Offered behavioral health in primary care offices via virtual care hub.
  - Rented space on hospital campus to Pennyroyal Center, which offers outpatient therapy and substance abuse counseling.
- Obesity
  - Hosted Farmers Market on hospital campus during the summer months to provide access to fresh produce.
  - Maintained Wellness Park on hospital campus for use by staff and community members.
  - Offered endocrinological services to care for patients affected by hormone-related diseases and disorders, many of which can impact body weight.
  - Provided sports medicine care to help keep community members active.
- COVID-19
  - Offered COVID-19 testing, including a virtual care visit followed by testing at an urgent care if needed.
  - Administered COVID-19 vaccines through the Family Medicine Clinic.

### Learning from Previous CHNA

During the last CHNA cycle, nine Baptist Health hospitals had 14 health needs to address in a three-year cycle. Baptist Health Deaconess Madisonville identified four priority health needs for its previous CHNA. To appreciate the synergy enjoyed by cumulative effort, Baptist Health narrowed focus and selected two to three health needs on which to focus per hospital. Given the quick turnaround time of the CHNA report in which to realize outcomes metrics, it is more meaningful to develop a few outcomes-based metrics addressing fewer needs than to track many process metrics addressing more needs, of which impact may not be discernible. We also look forward to implementing more evidence-based responses to our community health needs, which requires rigorous effort.

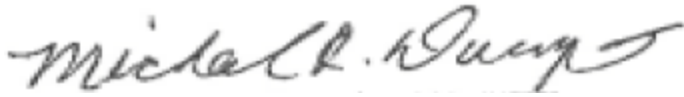
## Next Steps

Once approved by the Baptist Health Deaconess Madisonville, Inc. Board of Directors, this CHNA will be made public and widely available no later than August 31, 2024.

Baptist Health Deaconess Madisonville will use the findings in this CHNA to develop a plan to address each identified health need. This will include the actions we will take, resources committed, and any collaboration with external partners. This plan will be documented in an accompanying report, the Implementation Strategies. That report will be reviewed by the hospital leadership team before approval and adoption by the Baptist Health Deaconess Madisonville, Inc. Board of Directors. That report will be made public and widely available no later than January 15, 2025.

## Approval and Adoption

As an authorized body of Baptist Health Deaconess Madisonville, Baptist Health Deaconess Madisonville, Inc. Board of Directors approves and adopts this community health needs assessment on the date listed below.



August 23, 2024

---

Chair, Baptist Health Deaconess Madisonville, Inc. Board of Directors

Date

## References

- Baptist Health Planning Department. (2024). *Baptist Health Patient Origin Calendar Year 2023* [Dataset].
- Centers for Disease Control and Prevention. (2024). *Underlying Cause of Death, 1999-2020 Request: Deaths occurring through 2020*. CDC Wonder. Retrieved May 1, 2024, from <https://wonder.cdc.gov/controller/datarequest/D76>
- County Health Rankings and Roadmaps. (2024). *Health data*. County Health Rankings & Roadmaps. Retrieved May 1, 2024, from <https://www.countyhealthrankings.org/health-data>
- Hopkins County Health Department. (2024). *Personal communication*.
- Kentucky Injury Prevention and Research Center. (2023). *Kentucky Drug Overdose and Related Comorbidity County Profiles, 2018 to 2022 | KIPRC*. Retrieved May 1, 2024, from <https://kiprc.uky.edu/programs/overdose-data-action/county-profiles>
- The Center for Neighborhood Technology. (2024). *H+T Affordability Index*. H+T Affordability Index. Retrieved May 1, 2024, from <https://htaindex.cnt.org/map/>
- United States Census Bureau. (2024). *United States Census Bureau Quick Facts*. Retrieved May 1, 2024, from <https://www.census.gov/quickfacts/>
- World Health Organization: WHO. (2019, May 30). *Social determinants of health*. [https://www.who.int/health-topics/social-determinants-of-health#tab=tab\\_1](https://www.who.int/health-topics/social-determinants-of-health#tab=tab_1)

## Appendix

### Hopkins County Community Survey Results

Q1. Do you live or work in Hopkins County?		
Answer Choices	Responses	
I live in Hopkins County.	48.65%	54
I work in Hopkins County.	9.01%	10
I both live and work in Hopkins County.	41.44%	46
I do not live or work here.	0.90%	1
	<b>Answered</b>	<b>111</b>
	<b>Skipped</b>	<b>0</b>

Q2. Who or what do you rely on most often for health information? Please select all that apply.		
Answer Choices	Responses	
Public health officials (such as your local health department or the	54.95%	61
Television (news programs)	17.12%	19
Social media	29.73%	33
Healthcare provider	63.06%	70
Friend/family	29.73%	33
Radio	4.50%	5
Internet	33.33%	37
Community events	4.50%	5
Other (please specify)	0.90%	1
	<b>Answered</b>	<b>111</b>
	<b>Skipped</b>	<b>0</b>



Q3. In your opinion, what are the most important health problems in our community? Please select the top three.

Answer Choices	Responses	
Access to health care	33.33%	37
Cancers	33.33%	37
Homicide	7.21%	8
Infant death	11.71%	13
Dental problems	43.24%	48
Suicide and/or bullying	36.04%	40
Firearm-related injuries and deaths	9.01%	10
Heart disease and stroke	11.71%	13
Infectious diseases (including but not limited to COVID-19)	6.31%	7
Food insecurity	12.61%	14
Diabetes	21.62%	24
Overdose	36.04%	40
Teenage pregnancy	14.41%	16
HIV/AIDS	3.60%	4
High blood pressure	16.22%	18
Motor vehicle crash injuries and death	9.01%	10
Aging problems (arthritis, hearing/vision loss, etc.)	9.01%	10
Overweight/obesity	36.04%	40
Mental health problems	55.86%	62
Respiratory/ lung disease	6.31%	7
Sexually-transmitted infections	16.22%	18
Prefer not to answer	0.90%	1
Other (please specify)	1.80%	2
	<b>Answered</b>	<b>111</b>
	<b>Skipped</b>	<b>0</b>

Q4. In your opinion, what are the strengths of our community that can help citizens be healthier? Please select the top 3.

Answer Choices	Responses	
Low rates of adult disease and death	2.73%	3
Clean environment	19.09%	21
Sense of community belonging	13.64%	15
Arts and cultural events	10.00%	11
Strong family life	23.64%	26
Low rates of infant death	4.55%	5
Good place to raise children	28.18%	31
Affordable housing	22.73%	25
Good schools	34.55%	38
Local leaders (such as government or school leaders) who priori	9.09%	10
Access to health care	29.09%	32
Low crimes/safe neighborhoods	14.55%	16
Excellent race relations	3.64%	4
Healthy behaviors and lifestyles	11.82%	13
Religious or spiritual values	20.91%	23
Parks and recreation	34.55%	38
Good jobs and healthy economy	12.73%	14
Prefer not to answer	5.45%	6
Other (please specify)	0.00%	0
	<b>Answered</b>	<b>110</b>
	<b>Skipped</b>	<b>1</b>

Q5. Think about your physical health, which includes injury or physical illness. How many days during the past 30 days was your physical health not good?

	Answer Choices	Responses	
1		30.67%	23
2		17.33%	13
3		10.67%	8
4		6.67%	5
5		5.33%	4
6		4.00%	3
7		5.33%	4
8		1.33%	1
9		0.00%	0
10		4.00%	3
11		0.00%	0
12		0.00%	0
13		0.00%	0
14		0.00%	0
15		1.33%	1
16		1.33%	1
17		0.00%	0
18		0.00%	0
19		0.00%	0
20		4.00%	3
21		0.00%	0
22		0.00%	0
23		0.00%	0
24		0.00%	0
25		0.00%	0
26		0.00%	0
27		0.00%	0
28		0.00%	0
29		1.33%	1
30		6.67%	5
		<b>Answered</b>	<b>75</b>
		<b>Skipped</b>	<b>36</b>

Q6. Think about your mental health, which includes stress, depression, and problems with emotions. How many days during the past 30 days was your mental health not good?

Answer Choices	Responses	
1	18.18%	16
2	20.45%	18
3	5.68%	5
4	3.41%	3
5	10.23%	9
6	2.27%	2
7	1.14%	1
8	1.14%	1
9	0.00%	0
10	12.50%	11
11	0.00%	0
12	0.00%	0
13	0.00%	0
14	0.00%	0
15	4.55%	4
16	1.14%	1
17	0.00%	0
18	0.00%	0
19	0.00%	0
20	4.55%	4
21	0.00%	0
22	0.00%	0
23	1.14%	1
24	0.00%	0
25	4.55%	4
26	0.00%	0
27	0.00%	0
28	0.00%	0
29	1.14%	1
30	7.95%	7
<b>Answered</b>		<b>88</b>
<b>Skipped</b>		<b>23</b>

Q7. During the past 30 days, how many days did poor physical or mental health keep you from doing your usual activities, such as self-care, work, or recreation?

	Answer Choices	Responses	
		Percentage	Count
1		22.22%	14
2		15.87%	10
3		7.94%	5
4		0.00%	0
5		19.05%	12
6		1.59%	1
7		1.59%	1
8		1.59%	1
9		0.00%	0
10		9.52%	6
11		0.00%	0
12		0.00%	0
13		0.00%	0
14		0.00%	0
15		6.35%	4
16		0.00%	0
17		1.59%	1
18		0.00%	0
19		1.59%	1
20		3.17%	2
21		0.00%	0
22		0.00%	0
23		0.00%	0
24		0.00%	0
25		4.76%	3
26		0.00%	0
27		0.00%	0
28		0.00%	0
29		1.59%	1
30		1.59%	1
	<b>Answered</b>		<b>63</b>
	<b>Skipped</b>		<b>48</b>

Q8. Have you or a friend/family member utilized a local syringe exchange program to reduce the spread of hepatitis and HIV/AIDS?

Answer Choices	Responses	
	Yes	2.70%
No	97.30%	108
	<b>Answered</b>	<b>111</b>
	<b>Skipped</b>	<b>0</b>

Q9. What is your age?	
under 20 years	5
20-29 years	50
30-39 years	24
40-49 years	12
50-59 years	14
60-69 years	3
	<b>108</b>

**Q10. Are you...?**

Answer Choices	Responses	
None of the above	0.00%	0
Female	90.99%	101
Male	6.31%	7
Trans female/transwoman	0.00%	0
Trans male/transman	0.00%	0
Genderqueer/Gender nonconforming	1.80%	2
I prefer to describe my identity as... (write in)	0.90%	1
	<b>Answered</b>	<b>111</b>
	<b>Skipped</b>	<b>0</b>

Q11. What is the zip code where you live (or where you most often stay)?

Answer Choices	Responses
42038	1
42240	3
42325	2
42372	1
42404	1
42408	4
42408	8
42409	1
42410	3
42413	3
42431	63
42436	3
42440	1
42442	6
42445	3
42450	4
42453	1
42456	1
42464	2
	<b>111</b>

Q12. Are you Hispanic, Latino(a), or Spanish?

Answer Choices	Responses
Yes	5.45% 6
No	94.55% 104
Prefer not to answer	0.00% 0
	<b>Answered 110</b>
	<b>Skipped 1</b>



Q13. What is your race? Please select all that apply.		
Answer Choices	Responses	
White	90.00%	99
Black or African American	11.82%	13
Asian or Asian American	0.00%	0
American Indian or Alaska Native	0.91%	1
Native Hawaiian or other Pacific Islander	0.00%	0
Prefer not to answer	0.00%	0
Other (please specify)	0.00%	0
	<b>Answered</b>	<b>110</b>
	<b>Skipped</b>	<b>1</b>

Q14. What is the highest grade or year of school you completed?		
Answer Choices	Responses	
Never attended school or only attended kindergarten	0.00%	0
Grades 1 through 8 (Elementary)	1.80%	2
Grades 9 through 11 (some high school)	8.11%	9
High school graduate	26.13%	29
GED or alternative high school credential	1.80%	2
Some college credit but no degree	20.72%	23
Associates degree	15.32%	17
Bachelor's degree	20.72%	23
Master's degree	4.50%	5
Professional or doctoral degree	0.00%	0
Prefer not to answer	0.90%	1
	<b>Answered</b>	<b>111</b>
	<b>Skipped</b>	<b>0</b>

Q15. Are you currently...?		
Answer Choices	Responses	
A Homemaker	15.32%	17
A Student	6.31%	7
Employed for wages	61.26%	68
Unemployed and looking for work	4.50%	5
Unemployed and not looking for work	5.41%	6
Retired	0.90%	1
Self-employed	3.60%	4
Unable to work	2.70%	3
Prefer not to answer	0.00%	0
	<b>Answered</b>	<b>111</b>
	<b>Skipped</b>	<b>0</b>

Q16. What was your total household income last year?		
Answer Choices	Responses	
Under \$10,000	15.32%	17
\$10,000 to less than \$15,000	9.01%	10
\$15,000 to less than \$20,000	3.60%	4
\$20,000 to less than \$35,000	18.92%	21
\$35,000 to less than \$50,000	10.81%	12
\$50,000 to less than \$75,000	10.81%	12
\$75,000 to less than \$150,000	21.62%	24
\$150,000 or more	1.80%	2
Prefer not to answer	8.11%	9
	<b>Answered</b>	<b>111</b>
	<b>Skipped</b>	<b>0</b>

Q17. How would you describe your financial well-being?		
Answer Choices	Responses	
Living comfortably	36.04%	40
Getting by	45.95%	51
Finding it difficult to get by	13.51%	15
Finding it very difficult to get by	3.60%	4
Prefer not to answer	0.90%	1
	<b>Answered</b>	<b>111</b>
	<b>Skipped</b>	<b>0</b>

Q18. In the past year, have you or any family members you live with been unable to get any of the following when it was really needed? Please select all that apply.

Answer Choices	Responses	
	Percentage	Count
None of the above	58.72%	64
Child care	13.76%	15
Mental health care services	11.01%	12
Employment	5.50%	6
Food	10.09%	11
Clothing	5.50%	6
Addiction services	0.00%	0
Housing	7.34%	8
Elder care	1.83%	2
Utilities	6.42%	7
Health care	10.09%	11
Domestic violence assistance	1.83%	2
Transportation	5.50%	6
Adult educational services	0.00%	0
Prefer not to answer	2.75%	3
Other (please specify)	2.75%	3
	<b>Answered</b>	<b>109</b>
	<b>Skipped</b>	<b>2</b>

Q18. In the past year, have you or any family members you live with been unable to get any of the following when it was really needed? Please select all that apply.

Answer Choices	Responses	
	Percentage	Count
None of the above	58.72%	64
Child care	13.76%	15
Mental health care services	11.01%	12
Employment	5.50%	6
Food	10.09%	11
Clothing	5.50%	6
Addiction services	0.00%	0
Housing	7.34%	8
Elder care	1.83%	2
Utilities	6.42%	7
Health care	10.09%	11
Domestic violence assistance	1.83%	2
Transportation	5.50%	6
Adult educational services	0.00%	0
Prefer not to answer	2.75%	3
Other (please specify)	2.75%	3
	<b>Answered</b>	<b>109</b>
	<b>Skipped</b>	<b>2</b>

Q20. Do you have any kind of health care coverage, including health insurance, prepaid plans such as HMOs, government plans such as Medicare, Medicaid, or Indian Health Service?

Answer Choices	Responses	
	Percentage	Count
Yes	92.79%	103
No	4.50%	5
Not sure	0.00%	0
Prefer not to answer	2.70%	3
	<b>Answered</b>	<b>111</b>
	<b>Skipped</b>	<b>0</b>

Q21. What barriers exist that prevent you from receiving health services? Please select all that apply.

Answer Choices	Responses	
No barriers exist	51.82%	57
Lack of providers (including specialists)	20.00%	22
Lack of convenient appointment times	12.73%	14
Disability (mental/physical)	0.00%	0
Lack of information about where to obtain services	2.73%	3
Fear of judgement or discrimination	2.73%	3
Lack of child care	7.27%	8
language barriers	0.00%	0
Unable to take time off	8.18%	9
Out of pocket cost for appointments, procedures, or medications	14.55%	16
Unable to afford transportation (or afford gas for my car/trcuk)	5.45%	6
I don't have insurance	2.73%	3
Prefer not to answer	7.27%	8
Other (please specify)	1.82%	2
	<b>Answered</b>	<b>110</b>
	<b>Skipped</b>	<b>1</b>

Q22. How often have you been discriminated against for any of the following?

	Never		Rarely		Occasionally	
Race	72.64%	77	16.04%	17	7.55%	8
Religion	79.25%	84	13.21%	14	3.77%	4
Age	72.64%	77	22.64%	24	3.77%	4
Gender	70.75%	75	19.81%	21	9.43%	10
Sexual orientation	89.62%	95	7.55%	8	1.89%	2
Ability	84.91%	90	12.26%	13	2.83%	3
Body type	69.81%	74	15.09%	16	6.60%	7
	A moderate amount		A great deal			
Race	2.83%	3	0.94%	1		
Religion	3.77%	4	0.00%	0		
Age	0.94%	1	0.00%	0		
Gender	0.00%	0	0.00%	0		
Sexual orientation	0.94%	1	0.00%	0		
Ability	0.00%	0	0.00%	0		
Body type	6.60%	7	1.89%	2		
<b>Answered</b>	<b>106</b>					
<b>Skipped</b>	<b>5</b>					

Mini Resource Directory for Hopkins County, KY

**Counseling/Mental Health (MH), Substance Abuse (SA), Anger Management (AM) & DUI School (DUI)**

**Professional Licensed Counselors**

Behavioral Resources (SA/DUI/AM)	270-824-9355
Caris Counseling	270-681-2273
Healthy Choice	270-825-2070
Mountain Comprehensive Health Care	270-825-0414
Pennyroyal Mental Health CT (MH)	270-821-8874
Pennyroyal Respond/Adolescent Sub Abuse	877-473-7766
Sunrise Family Services	270-874-2560
Wade Through Water Counseling, LLC	270-215-4438

**Faith Based Counseling**

Baptist Counseling CT (MH/SA/Couples)	270-825-8232
Pennyrile Christian Counseling	270-825-8746
The Salvation Army	270-825-3620

**Home Health (HH)/ Hospice/ Sitters/Agencies/ Medical Equipment**

Baptist Health Deaconess Home Health	270-824-3470
Baptist Health Deaconess Hospice	270-326-4660
Bluegrass Pharmacy / Home Medical	270-825-2775
Black Pearl Home Care	270-245-2470
Caretenders	270-326-5222
Centerwell Home Health	270-885-7887
Companion Care Sitter Service	270-635-5760
Home Instead Senior Care	270-827-1333
Hospice and Palliative Care of W KY	270-926-7565
Intrepid Home Health	270-389-4551
King Home Care Medical Equipment	270-825-8833

**Nursing/Personal Care Homes/Assisted Living**

Brighton Cornerstone Healthcare	270-821-1492
Dawson Springs Health & Rehab	270-797-2025
Hillside Center (Genesis Health Care)	270-821-1813
Homestead Personal Care Home	270-821-5294
Madisonville Health & Rehabilitation	270-821-5564
Oakridge Retirement Center (ALC)	270-821-2155
Ridgewood Terrace Health-Rehab	270-825-0166
The Paragon of Madisonville	270-824-9006
Tradewater Health & Rehab CT	270-797-8132
Western KY Veteran's Center	270-322-3566

**Medical Information**

Baptist Health	270-825-5100
Centers for Disease Control & Prev	800-232-4636
Hopkins County Health Dept	270-821-5242
Kentucky Cancer Program	270-821-4298
Kentucky HIV Hotline (KY Health Dept)	844-294-2448

Kentucky Infections Disease Call CT	800-722-2525
Kentucky Medicaid Connect	855-459-6328

See also Senior Citizen Services, Disabilities & Emergency

**Mental Health Inpatient**

Baptist Health Behavioral Health Unit	270-825-5650
Western State Hospital	270-889-6025

**Pregnancy Support Services**

Door of Hope (Faith Based)	270-821-9825
Hopkins Co Health Dept	270-821-5242

**Prescription Drug Assistance**

Health First Community Health CT	270-905-4084
Hopkins County Community Clinic	270-824-3530
Regional Senior Citizens Ct (KPAP)	270-821-9173
SNAP Emp & Training (855-360-8595)	270-824-7566
St Vincent de Paul Store	270-821-2159
The Salvation Army	270-825-3620

**Substance Abuse Inpatient Treatment**

A separate brochure entitled "Navigating Substance Use Disorder" is available at the United Way of the Coalfield office

Coalfield office	270-821-3170
------------------	--------------

**HOUSING VIVIENDA**

Habitat for Humanity	270-825-1539
PACS Weatherization	270-821-8114

**Subsidized Housing**

Cross Creek Apartments	270-821-8826
Eastside Apts. (Section 8)	270-821-8905
Housing Authority of Dawson Springs	270-797-2512
Housing Authority of Madisonville	270-821-5517
Jamestown Village, Brentwood/Doe Run	270-821-2763
Madisonville Apts (Section 8)	270-821-1429
Pennyrile Park Apts	270-821-7830
Quail Run Apts (Earlington)	270-383-5306
Rolling Hills Apts (Nortonville, Section 8)	270-676-8542
Rosedale Court Apts (D S Section 8)	270-797-2083
Shiloh Apts (Rural Dev)	270-824-9388
Wiman Garden Apartments	270-245-2707

**Temporary**

Elizabeth's House (faith-based women's shelter)	270-249-0190
Salvation Army (24/7 shelter)	270-825-3620
Sanctuary, Inc. (domestic violence shelter)	270-885-4572

Transitional Sober Living listing is in the "Navigating Substance Use Disorder" brochure

Coalfield office	270-821-3170
------------------	--------------

**Law Enforcement – NON EMERGENCY**

**Aplicación de la ley – NO EMERGENCIA**

City of Dawson Springs Police Dept	270-797-2277
City of Madisonville Police Dept	270-821-1720
Crime Stoppers of Hopkins Co (anonymous)	270-825-1111
Hopkins Co Jail	270-821-6704
Hopkins Co Sheriff Dept	270-821-5661
KY State Police	270-676-3133 or 800-222-5555
Pennyrile Narcotics Task Force Tip Line	800-624-4596

**LEGAL SERVICES SERVICIOS LEGALES**

Hopkins CO Child Support Unit	270-821-6666
Hopkins county Circuit Court Judge	270-824-7422
Hopkins County Attorney	270-821-3164
Hopkins County District Judges	270-824-7512
Hopkins County Family Court	270-824-7342
KY Commonwealth ATTY (4 <sup>th</sup> Judicial)	270-824-7018
KY Legal Aid	270-825-3801
Ky Public Defender (Dept of Public Advocacy)	833-254-2468

**SENIOR CITIZENS SERVICES**

**SERVICIOS CIUDADANOS SENIOR**

**Senior Resources**

AARP of Hopkins County	270-383-5471
Almost Family Medicaid Waiver	270-685-3234
Family Caregiver Support Program (PADD)	800-928-7233
Foster Grandparent Program	270-683-1335
Medicare/Medicare Prescription Drug Plan	800-633-4227
PACS Retired Sr Volunteer Program (RSVP)	270-821-9173
Pennyrile Area on Aging (PADD)	800-928-7233
Regional Senior Citizens CT (legal aid)	270-821-9173
Social Security Admin – local	877-626-9912
UMWA Health and Retirement Funds	270-824-8199
Veterans Assistance (Hanson)	270-399-1618

**SUPPORT SERVICES**

**SERVICIOS ASISTENCIALES**

(Medicaid, Medicare, Food Stamps, etc.)

ARCH Health Coalition Case Managers	314-392-8992
PACS Kynector	270-839-6603

**TRANSPORTATION TRANSPORTE**

Greyhound Bus Station (Mortons Gap)	270-258-0008
Madisonville Transit	270-821-1595
PACS Transportation	270-821-3232
PACS (transportation - Bus tickets)	270-821-8114

**Mini Resource Directory  
for  
Hopkins County, KY**

Information Compiled in 5/2023 by  
Interagency Council of Hopkins Co &  
United Way of the Coalfield  
270-821-3170

**EMERGENCY (24 ASSISTANCE)**

**EMERGENCIA ASISTENCIA (24 HORAS)**

For any Emergency	911
American Red Cross (Disaster)	800-733-2767
Poison Control	800-222-1222
Suicide and Crisis Hotline	800-273-8255
Sanctuary, Inc Crisis Hotline (Domestic Violence)	800-766-0000
Sanctuary, Inc. Hopkins County	270-498-8918

**ABUSE (Agencies to Assist Victims) ABUSO**

To report ABUSE of ADULTS or CHILDREN, contact KY Dept. of Comm Based Services, Division of Protection & Permanency (DCBS, P&P) 855-306-8959  
Protection & Permanency (KY CHFS) 270-824-7566  
Centralized Intake for Child & Adult Abuse 877-597-2331  
CASA of Midwest Kentucky, Inc. 270-245-5112  
Pennyrile Children’s Advocacy (24-7) 270-881-1111

**ANIMALS**

Ho Co Health Dept (Bites)	270-821-5242
Ho Co Humane Society/Animal Control	270-821-8965

**ASSISTANCE ASISTENCIA (Clothing, Food, Utility)**

211 Assistance (Information/Referral)	211
Common Garments (Nebo) C	270-249-0190
Breaking Bread (3rd Sat of mo; 275 W Center)	270-836-5822
Christian Food Bank F	270-825-8296
Covenant Care Food Bank F	270-821-2000
DAPS (Dawson Springs Personal Serv) F	206 E Railroad
First United Methodist Ch Wed Takeout Meal	270-821-5734
Hope2All (Nortonville) F	270-676-3784
Lone Star Pentecostal Church C	270-821-0700
PACS-CSBG C/U	270-821-8114
Regional Senior Citizens Center 60 + F	270-821-9173



**ASSISTANCE ASISTENCIA CON'T.**

St Vincent de Paul Store C/U	270-821-2159
The Salvation Army C/F/U	270-825-3620
WIC (Health Dept) F	270-821-5242
YMCA (18 & under) F	270-821-9622

**DAY CARE / AFTER SCHOOL CARE**

**SERVICIOS DE GUARDERIA INFANTIL**

KY Licensed/Certified <https://benefind.ky.gov/kccps>

A Shepherd's Love Day Care	270-245-5088
Alicia's Play, Learn, & Grow	270-871-5087
Bloom Day Care	270-875-5486
Camp Pride Child Care (off during summer)	270-871-5338
Caring Hands Home Day Care	270-841-9727
Christ the King Learning & Growth CT	270-821-3954
Club Southside (off during summer)	270-676-9200
First Christian Church Preschool, KDG	270-821-5365
First United Meth Preschool & Parents Day Out	270-821-5734
Hopkins County Child Development Ct	270-825-0420
Hopkins County Head Start	270-821-1455
Jump Start Academy	270-245-2032
Little Panther Academy (off during summer)	270-797-3811
Mary Rosario, Childcare Home	270-875-6210
Michelle's Busy Bees Family Preschool	270-339-1496
Ms. Robbie's Day Car	270-821-5508
Nanna's Place	270-824-9800
Pride Avenue Head Start	270-825-6030
Thrive Early Learning Academy	270-841-2953
Waumbaland Nursery Preschool	270-562-0366
YMCA Kids Center	270-825-1254
YMCA/Hanson & W Broadway Afterschool	270-825-1254

**Infant and Child Services (see also Disability)**

Child Care Council of Kentucky	859-254-9176
HANDS (Parenting Program, Health Dept)	270-821-5242
WIC (Health Dept)	855-360-8595 270-821-5242

**DISABILITY PARA LOS DISCAPACITADOS**

KY Vocational Rehab / Blind Services	502-429-4460
Evergreen Life Services	270-245-2108
First Steps (Early Intervention 0-3 yrs)	270-886-5186
Health First Community Health CT (Earlington)	270-905-4084
HEAR NOW (Starkey Hearing Found)	800-328-8602
Knights Templar Eye Foundation	214-888-0220
KY Office for Children with Special Needs	800-232-1160
KY Office of Vocational Rehabilitation	270-824-7549
KY Relay Service Hearing Impaired/Voice	711

Lions Club - Eye glasses	270-452-2264
MCC (helps students/disabilities)	270-824-1708
Muhlenberg Opportunity Center	270-338-5970
Omni Visions	270-825-1698
Outwood/ResCare Residential Services	270-797-3771
Pennyroyal Center	877-473-7766
Trace Industries (ED Services)	270-821-4102

**EDUCATION EDUCACION**

**Elementary Schools & FRC / YSC**

Dawson Springs Elem. (K-6)	270-797-3811
Dawson Springs School FRC / YSC	270-797-3811
Grapevine Elem. & FRC	270-825-6012
Hanson Elem. & FRC	270-825-6158
Jesse Stuart Elem. & FRC	270-825-6033
Pride Elem. & FRC	270-825-6030
Southside Elem & FRC	270-825-6143
West Broadway Elem. & FRC	270-825-6036
West Hopkins Elem. (K-8) & FRC	270-825-6130

**Jr High/Middle Schools & Youth Service (YSC)**

Dawson Springs Jr/Sr High (7-12)	270-797-3811
Browning Springs Middle & YSC	270-825-6006
James Madison Middle & YSC	270-825-6160
South Hopkins Middle & YSC	270-825-6125
West Hopkins Middle & YSC	270-825-6130

**High Schools (HS)**

Hopkins CO Day Treatment CT	270-825-6059
Hopkins CO Career & Technology CT	270-825-8998
Dawson Springs	270-797-3811
Hopkins Central HS & YSC	270-825-6133
Madisonville North Hopkins HS & YSC	270-825-6017
Hopkins Co Schools Academy	270-825-6059

**Parochial & Private Schools**

Christ the King School (K-8)	270-821-8271
CornerStone Prep School (K-12)	270-841-7540
Grace Baptist Church	270-322-3381
Living Word Christian School (K-12)	270-669-4414

**Colleges, Universities, & Trade Schools**

(KCTCS; also known as (MCC)	270-821-2250
Lindsey Wilson College (online)	270-836-8339
Madisonville Beauty College	270-821-0923
Murray State University	270-825-4379

**College & Trade Readiness**

MCC, Adult Education ACE <sup>2</sup>	270-824-1818
MCC, Assessment Center	270-824-1701
Jobs Corp., Muhlenberg Co Career Ct (16-24)	270-338-5460
Ready to Work (KTAP College or GED)	270-824-8670
MCC, Work Connections	270-824-1761

**Tutoring / Test Prep**

The Learning Center	270-245-2600
---------------------	--------------

**Non-credit Learning**

Hopkins CO Regional Sr Cit CT	270-821-9173
KCTCS (MCC) Workforce Solutions	270-824-8660
Pennyroyal Master Gardener Program	270-821-3650
UK Coop. Extension Service Ho Co	270-821-3650
YMCA	270-821-9622

**Student Development Organizations**

4-H Club (Hopkins Co Extension)	270-821-3650
Boy Scouts Lincoln Heritage Trail	502-361-2624
Girl Scouts of Kentuckiana	888-771-5170
Impact Mentoring (formerly Big Bro Big Sis)	270-821-0688
Light of Chance (Mentoring/Wellness/Arts)	270-875-4332
Plans4U Youth Organization	270-339-4876
The Salvation Army	270-825-3620

**EMPLOYMENT/VOCATIONAL ASSISTANCE**

**EMPLO/APOVO VUCACIONAL**

**Unemployment Filing**

<https://uiclaims.des.ky.gov/ebenefit/eben.htm>

**Jobs**

Hopkins CO Court Designated Worker	270-824-7574
JobNet Career Center (W KY Workforce)	270-821-9966
GoodWill Industries SCSEP (Sr Emp +55)	812-474-2220
<a href="https://www.hopkinscokyjobs.com/job-openings.html">https://www.hopkinscokyjobs.com/job-openings.html</a>	

**Temp Agencies**

Custom Staffing Services	270-322-5020
Manpower	270-825-0691
People Plus	270-825-8939
Star Mine Services (no answer)	270-584-9029
Proman Staffing	270-824-9300

**FOSTER CARE ORFANTO**

Benchmark Family Services	270-926-4635
Omni Visions	270-825-1698
NECCO/Behavioral Health	270-685-5500
Sunrise Children & Family Services	270-874-2560

**GOVERNMENT SERVICES**

**SERVICIOS DEL GOBIERNO**

City of Dawson Springs	270-797-2781
City of Earlington	270-383-5364
City of Hanson	270-322-8521
City of Madisonville	270-824-2100
City of Mortons Gap	270-258-5362
City of Nortonville	270-676-3384
City of ST Charles	270-669-0095
City of White Plains	270-676-8639
Hopkins County Government Center	270-821-8294
Hopkins County Health Dept (Plumbing)	270-821-5242
Hopkins County Public Works	270-326-6160

**Chamber of Commerce**

Dawson Springs Chamber (inactive)	270-797-2781
Hopkins Co Regional Chamber of Comm	270-821-3435

**Economic Development**

Madisonville-Ho Co Economic Dev	270-821-1939
Innovation Station – Co Working Incubator	270-821-1939
Minority Economic Dev Council	270-825-8900

**HEALTH SALUD**

<b>Ambulance (non-emergency)</b>	270-821-5301
----------------------------------	--------------

**Hospitals**

Baptist Health Deaconess Madisonville	270-821-5100
Western ST Mental Hospital (Hopkinsville)	270-889-6025

**Clinics and Urgent Care**

For information on Chiropractic Care, Dermatology & Plastic Surgery, Dentists, Optometrists, & Physical Therapy, & Medical Specialists go to

<https://www.movetomadisonvilleky.com/healthcare.html>

Baptist Health, Deaconess, Madisonville	270-825-7200
Baptist Health Deaconess, Dawson Springs	270-797-3521
Baptist Health Deaconess, Urgent Care	270-825-7268
Bridgewater Medical Center	270-821-6262
Coal Miner’s Respiratory Clinic	270-338-8300
Fast Pace Health Urgent Care	270-228-0592
First Care Urgent Care	270-245-2554
Health First Community Health CT (Earlington)	270-905-4084
Hopkins County Community Clinic	270-824-3530
Hopkins County Health Dept	270-821-5242
Owensboro Health M’ville Healthplex	270-399-7900
Owensboro Health Family Practice	270-821-4444
Veteran’s Clinic (Evansville)	866-289-3300